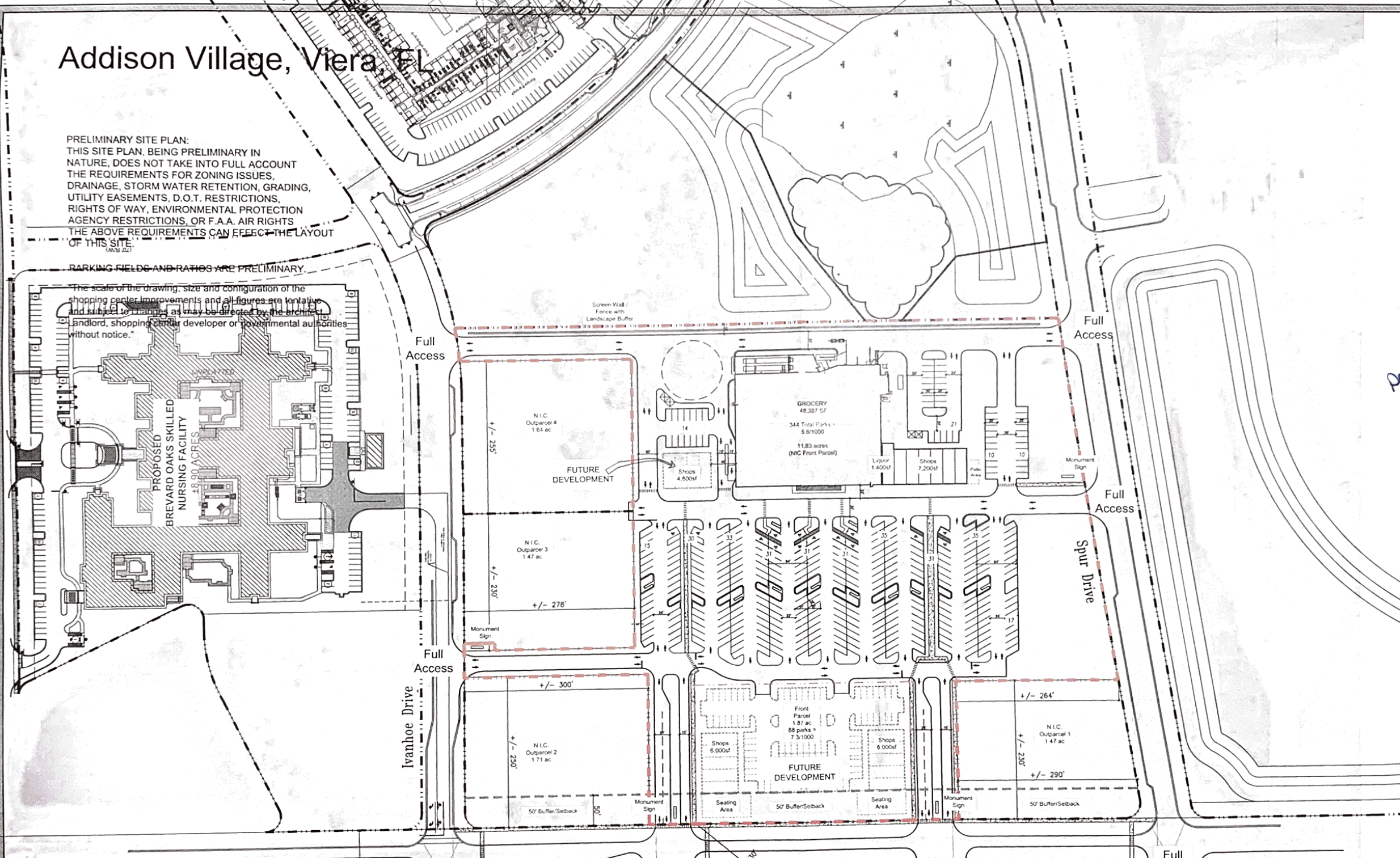


# Addison Village, Viera, FL

PRELIMINARY SITE PLAN:  
 THIS SITE PLAN, BEING PRELIMINARY IN NATURE, DOES NOT TAKE INTO FULL ACCOUNT THE REQUIREMENTS FOR ZONING ISSUES, DRAINAGE, STORM WATER RETENTION, GRADING, UTILITY EASEMENTS, D.O.T. RESTRICTIONS, RIGHTS OF WAY, ENVIRONMENTAL PROTECTION AGENCY RESTRICTIONS, OR F.A.A. AIR RIGHTS. THE ABOVE REQUIREMENTS CAN AFFECT THE LAYOUT OF THIS SITE.

PARKING FIELDS AND RATIOS ARE PRELIMINARY.

The scale of the drawing, size and configuration of the shopping center improvements and all figures are tentative and subject to change as may be directed by the architect and/or, shopping center developer or governmental authorities without notice.



PROPOSED  
 BREVARD OAKS SKILLED  
 NURSING FACILITY  
 48,900 SF

N.I.C. Outparcel 4  
 1.64 ac  
 +/- 285'

N.I.C. Outparcel 3  
 1.47 ac  
 +/- 278'

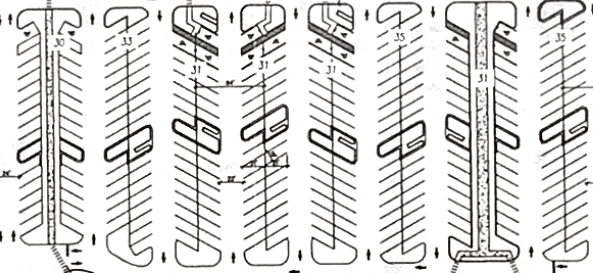
N.I.C. Outparcel 2  
 1.71 ac  
 +/- 250'

GROCERY  
 48,387 SF  
 344 Total Parks  
 5.6/1000  
 11.83 acres  
 (NIC Front Parcel)

Shops  
 4,800sf

Liquor  
 1,400sf

Shops  
 7,200sf



Front Parcel  
 1.87 ac  
 88 parks  
 7.5/1000

Shops  
 6,000sf

Shops  
 6,000sf

FUTURE DEVELOPMENT

N.I.C. Outparcel 1  
 1.47 ac  
 +/- 230'

+/- 290'

Full Access

Full Access

Full Access

Full Access

Ivanhoe Drive

Spur Drive

Full